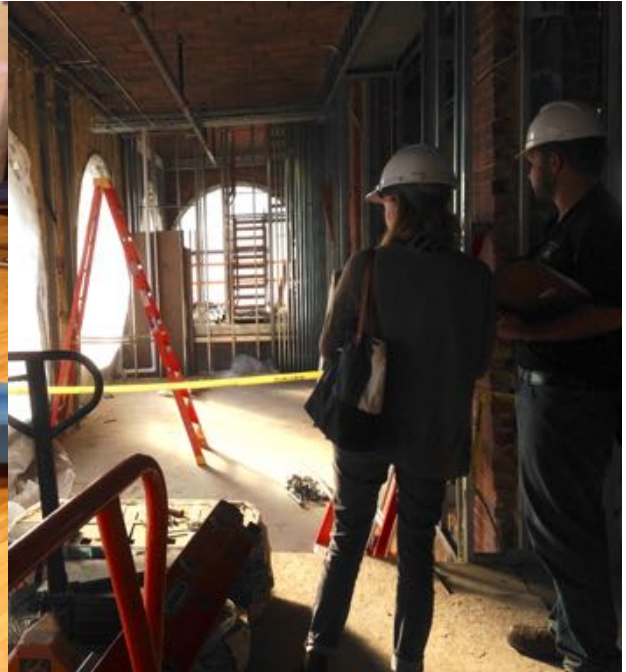


# 2016 Annual Report



WHERE SCIENCE & PLAY  
INTERSECT!



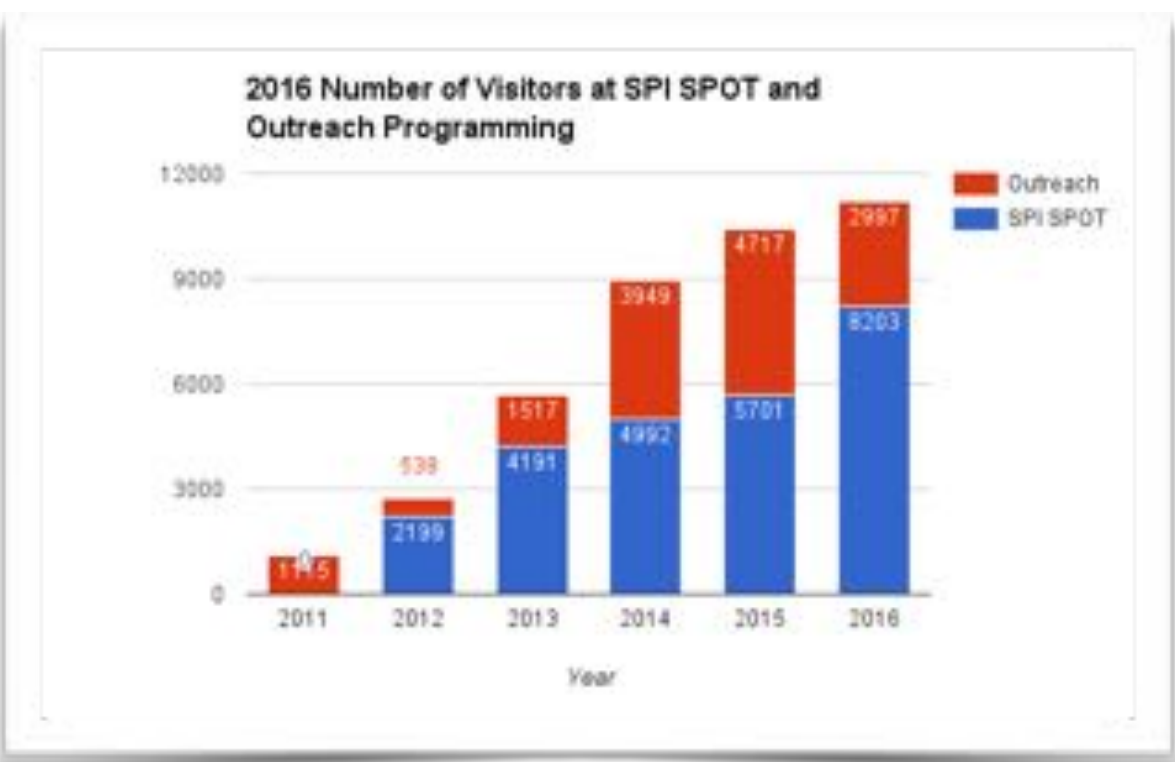
SPI's mission is to enhance Knox County by bringing people of all ages together to explore science and technology through play

**SPI** has grown from SPI: Science Play Space Initiative to a thriving organization. We end 2016, no longer an initiative, with new interpretation of our acronym: SPI: where Science and Play Intersect.

We continue to grow with 40% increase in visitors to our Discovery Space at SPI Spot from last year. Without our special exhibit Contraptions A-Z in 2014-2015, our visitors to outreach events are lower in 2016 but include an increased variety and number of camps as well as some new outreach opportunities through NISE net (National Informal STEM educational Network) that included the Building with Biology events and the Nano related programming. One of these was a forum on genetically engineered mosquitoes for adults.

Moving to our new space in the Wright Center in the Buckeye Building continues to take time and effort in planning and securing funding. The building is beginning to take shape and we are excited to see our plans become reality when we open in March. We expect to finish the work before the end of 2017.

The upcoming move continues to be an opportunity to increase our organizational capacity and serve more constituents. We look forward to an exciting new year in a new space in partnership with Kenyon College, while remaining a separate private non profit entity.



# SPI SPOT Discovery Space 2016

2016 SPI Spot Visitor Origin During Regular Hours



## Field Trips

1st & 3rd Grades  
Girl Scouts  
Preschools  
Daycares  
Playgroups  
Salvation Army Camp  
weekly in the summer

## SPI Spot Free Open Houses

### First Fridays

- *Vortex Cannon,*
- *Egg drop with Siemens Engineers*

### Second Saturdays

- *Pi Day (March)*
- *Kenyon Science Kids day (Apr & Nov)*
- *Dec, Jan, Feb*

**Christmas Walk**  
**STEMfest**

## Nano days (Spring break)

Zoom into Nano  
Small and Surprising  
Labs and Tools  
Tech and Nature  
Nano and Our Lives

# SPI Outreach 2016

## Earth day Festival at KAC

- UV Sensitive Beads
- NanoSunscreen at

## Earth and Energy Day in Utica

- Imagination Playground

## Fourth of July at Ariel Foundation Park

- Imagination Playground

## BFEC Harvest Festival

- Apple Maturity Testing

## Building with Biology

at the Library with Kenyon Partners

- Synthetic Biology Brown Bag Event
- Should We Genetically EngineerThe Mosquito? Adult Forum

## Kinetic Science Challenge

26 stations  
Library Summer Reading Kickoff at Gambier, Mount Vernon, Fredericktown, Danville

## Hiawatha

### City Parks Program

### Riverside Park Free Lunch Program

- Silly Putty
- Magic Breath
- Walking water
- Fizzing "Fireworks"
- Make your own Kaleidoscope
- Stomp Rockets
- Recessive Gene Bingo

## SVUMC

### Columbia after school program

- Zoom into Nano
- "Stained Glass"
- Straw STEM Challenge
- UV beads
- Windsocks
- Elephant Toothpaste

### Salvation Army

- Musical Instruments
- Zoom into Nano
- Small and Surprising

## Summer Camps

### BFEC Camps

- Nature Camp
- Science Play Camp

### Sci-Art Camps

- Trash to Treasure;
- Nature's gifts

### Tech Camps

- Lego Simple Machines
- Lego Robotics,
- Android Coding
- Everyday Chemistry

### Language Science Camp

## Sponsors of

### Summer Music in the Garden

- origami Cicadas
- stomp rockets

### 2017 Knox County Solar Balloon

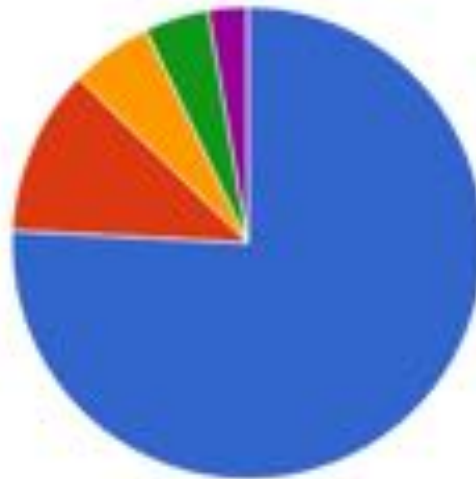
### Eclipse Project

- 4-H STEM Robotics, First Lego League Teams



# SPI Finances 2016

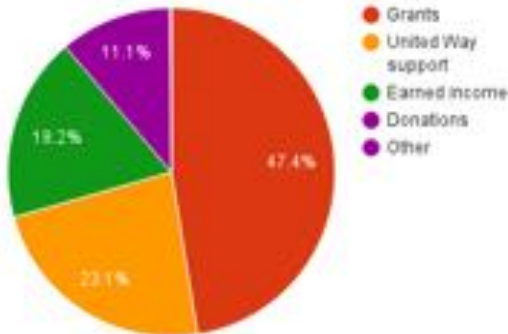
2016 SPI Income



- Restricted Contributions - Buckeye Building
- Grants
- United Way support
- Earned income
- Donations
- Other

2016 SPI Total Income	
<i>Restricted Contributions - Buckeye Building</i>	<b>\$333,207</b>
<b>Operating</b>	
Grants	\$50,415
United Way support	\$24,583
Earned income	\$19,365
Donations	\$11,748
Other	\$176
<b>Operating subtotal</b>	<b>\$106,288</b>
<b>Total</b>	<b>\$439,495</b>

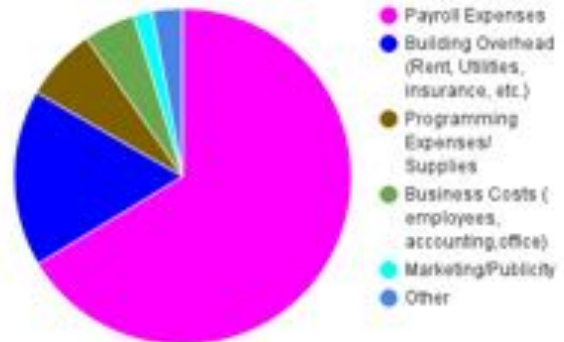
2016 SPI Operating Income



- Grants
- United Way support
- Earned income
- Donations
- Other

2016 SPI Operating Expenses	
Payroll Expenses	\$77,189
Building Overhead (Rent, Utilities, insurance, etc.)	\$19,762
Programming Expenses/Supplies	\$8,166
Business Costs (employees, accounting, office)	\$5,736
Marketing/Publicity	\$2,106
Other	\$3,396
<b>Total</b>	<b>\$116,355</b>

2016 SPI Operating Expenses



- Payroll Expenses
- Building Overhead (Rent, Utilities, insurance, etc.)
- Programming Expenses/Supplies
- Business Costs (employees, accounting, office)
- Marketing/Publicity
- Other

## SPI Contributors in 2016

---

### **Supporters (up to \$249)**

Anonymous  
Ashley Cannon  
Sonia and Jay Corrigan  
James and Cynthia Cunningham  
Richard and Susan Cunningham  
Eric Diehl  
Kathy and Chris Gillen  
Doug and Susan Givens  
PJ and Grey Glandon  
Kroger Community Rewards  
Nancy Laslo  
John G. & Carol Sue Owens  
Ruth Sinclair  
Jana Stewart  
Martha Stuller  
Paula Turner

### **Viking: \$250**

Anonymous  
Aetna Employee Match  
Duane Barber  
Sam and Paula Barone  
John Ellis  
Kenyon Chemistry Department Faculty&Staff  
Debbie Shepherd-Gregg and Dr. Geoff Gregg  
Ray and Patricia Heithaus  
Exchange Club of Mount Vernon  
G.R. Smith Hardware  
Jennifer and Marc Odenweller  
Dr. David and Marci Pressler  
Rouhier Family  
Vickie Sant  
Gordon and Susan White

### **Pathfinder \$500**

Keith and Kate Burley  
Colleen and Andrew Clarkson  
Central Ohio Technical College

Siemens Energy  
Jason and Samantha Hughes  
Sandra Hughes  
Kenyon Biology Department Faculty & Staff  
Cameron and Chris Keaton  
Richard and Peggy Mavis  
Amy Murnen

### **Curiosity \$1000**

Brian Ball and Sara Mankins  
James and Maureen Buchwald  
The Peters Creek Fund  
Larry and Sarah Goslee Reed  
Kurt and Sandy Schisler  
Hunter and Katie Wright

### **Explorer \$2500**

Robert and Elisabeth Meier  
First Knox National Bank

### **Deep Impact \$5000**

Doug Givens, Trustee  
Jan Schild  
Alex and Libby Wright

### **New Horizons \$10,000**

Sean Decatur and Renee Romano  
Phil and Lynne Glandon  
Ken and Jan Reynolds  
Knox Community Hospital  
Ian and Charlotte Watson

### **Voyager 25000+**

The Community Foundation of Mount Vernon  
& Knox County  
Burgett Family Foundation  
Ramser Family  
Ariel Foundation  
Karen Buchwald Wright

### **Additional Support for SPI Programming in 2016**

Ariel Foundation Grants  
Creativity Garden, a minigrant program through the ASTC funded by the Disney Foundation  
NISEnet Building with Biology Program Grant  
NISEnet Explore Science: Zoom into Nano Kits  
United Way Partnership  
Youth Philanthropy Initiative of the Community Foundation of Mount Vernon and Knox County

## SPI Board and Staff in 2016

Board Officers	Board Members	Part Time Employees
Andrea White <i>President</i>	Brian Ball	Rachel Garcia <i>Executive Director</i>
Ruth Sinclair <i>Vice-President</i>	Duane Barber	Josh Ganz <i>Operations Manager</i>
Ashley Cannon <i>Treasurer</i>	Colleen Clarkson	Jenny Cadoret
Scott Patterson <i>Secretary</i>	Jason Hughes	LeAnne Tindall
	Josh Kirby	Madelyn Strickling <i>through July 2016</i>
	Ann Laudeman	Erin Bell <i>Summer Employee</i>
	Jessica Oler	Jim Pletcher <i>Fall 2016</i>
	Sarah Goslee Reed <i>(Advisory Board)</i>	Tara Severance <i>started Dec 2016</i>

